

Swale 1244↑ × 465↔ YP
colour: RAL 3020

Integrated thermostatic valve, angled, right, chrome
SLIM thermostatic head, chrome
Integrated pipe-masking set, chrome

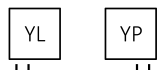




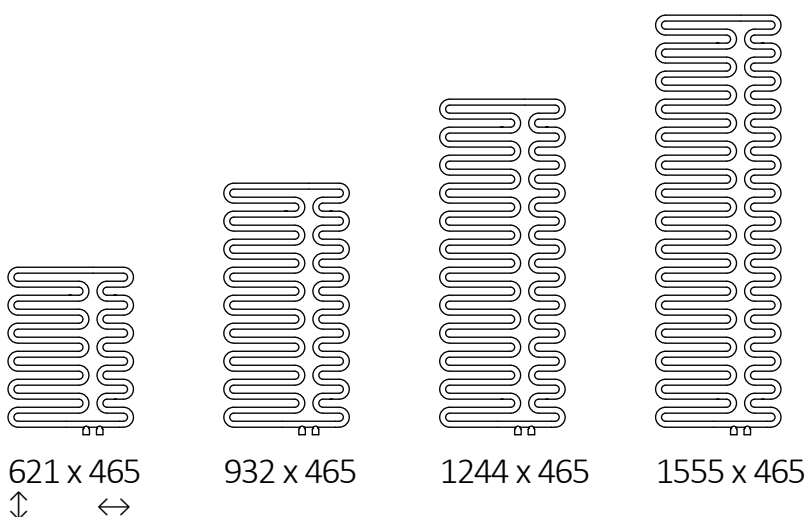
colour included
in the price

Design: Terma

Standard connection:





Available sizes:



Specification:

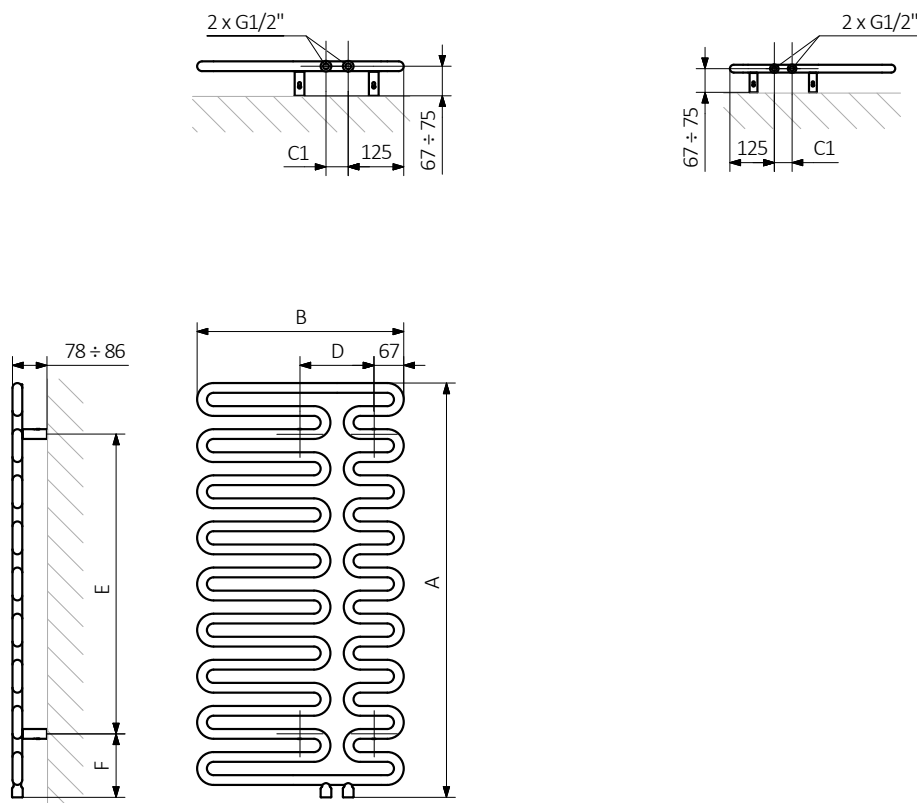
Working pressure: 1000 kPa Maximum operating temperature: 95°C

A \updownarrow [mm]	B \leftrightarrow [mm]	C1 [mm]	75/65/20°C [W]	55/45/20°C [W]	D [mm]	E [mm]	F [mm]	 [dm ³]	 [kg]	Product code <small>Configuration code p. 5</small>
621	465	50	258	139	165	363	143	1,25	6,87	WGQ09062046
932	465	50	385	205	165	674	143	1,86	10,19	WGQ09093046
1244	465	50	512	269	165	986	143	2,47	13,52	WGQ09124046
1555	465	50	640	332	165	1297	143	3,09	16,84	WGQ09155046



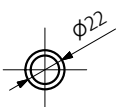
Technical drawing:

YL



A – Height B – Width C1-C5 – Distance between pipe centres D – Horizontal distance between mounting bracket centres
E – Vertical distance between mounting brackets F – Distance between a mounting bracket and the bottom of the radiator

Pipe:





In the table with technical data, the last column lists product codes. When placing an order, please remember to quote the product code followed by the configuration code as shown in the diagram below:

The construction of a water and dual fuel radiator product and configuration code:

WGQ09062046

K916YP

PRODUCT CODE
(located in the table for the product)

CONFIGURATION CODE
(supplemented by hand)

Example Configuration

K 916 YP

Package code

Colour code

Connection code

K - carton box

Epoxy primer

E - Code of epoxy primer is an extra processes.

WGQ09062046 K916YP **E** — *Extraprocesses or additions code*



colour included
in the price

Legend



Radiator available in a "water" version.



Radiator suitable for dual fuel connection. Electric heating element can be installed.



Radiator available in electric only version. It comes prefilled with a 'heating medium' and equipped with a heating element. All tested and ready to use.



Connection types dedicated for this radiator. The icon shows the flow and return connections for the radiator as well as the thermostatic valve and heating element position if applicable.



Suggested heating element power output for electric and dual fuel versions.



Weight.



Capacity.



Available in chrome finish.



colour
included
in the price

No additional payment for a color.